

ENGINEERS  
WITHOUT  
BORDERS  
USA

---

# 2017 ANNUAL REPORT



# CONTENTS

MISSION	03
WE ARE UNSTOPPABLE	04
WE ARE EWB-USA	05
WE ARE IMPACTFUL	08
WHERE WE WORK	09
DEEPENING OUR IMPACT	10
PEOPLE	12
PROJECTS	13
WE ARE DISRUPTORS	16
OUR FINANCIAL STORY	18
OUR CAPACITY BUILDERS	20
OUR BOARD OF DIRECTORS	22



# OUR MISSION

A photograph of three children sitting in a field of tall grass, smiling and looking towards the camera. The image is faded and serves as a background for the text on the right side of the page.

**EWB-USA BUILDS A BETTER WORLD THROUGH  
ENGINEERING PROJECTS THAT EMPOWER  
COMMUNITIES TO MEET THEIR BASIC HUMAN  
NEEDS AND EQUIP LEADERS TO SOLVE  
THE WORLD'S MOST PRESSING CHALLENGES.**

# We are **UNSTOPPABLE**

**“Improving the lives of the 5 billion people whose main concern is to stay alive by the end of each day on our planet is no longer an option for engineers; it is an obligation.”**

**-EWB-USA Founder Dr. Bernard Amadei**

Engineers Without Borders USA (EWB-USA) is proud to be the pathway global engineers take to meet Dr. Amadei’s challenge to use their unique skills for good.

In 2017, we unleashed the power of engineering to change the world by connecting our volunteers’ expertise to 651 projects serving an estimated 6.9 million people.

The story of our impact in 2017 extends beyond engineers. EWB-USA is a diverse, inclusive and growing movement of individuals and organizations committed to improving the lives of the world’s most vulnerable people. Every member of our movement brings resources and talent that drive progress toward sustainable solutions for tackling poverty.

**Together, we’re unstoppable. Together, we’re building a better world.**



**2017**



**651**  
PROJECTS



**6.9M**  
PEOPLE



We are  
**EWB-USA**

We are **EWB-USA**



## STUDENT VOLUNTEER

“Volunteering with EWB-USA offers the opportunity to apply the engineering skills that I’ve learned in class to something that’s without a doubt useful, practical, and beneficial to other people. Not only did I meet a family here, but from the people I’ve met through this organization I’ve come to realize the larger impact EWB-USA has made and can make.” -Tiffany Yuenn

Tiffany is one of 9,295 student members.



## COMMUNITY MEMBER

Community leader Hureata Yengai lives in Mbokop, Cameroon, one of **550 communities** EWB-USA collaborated with in 2017.

Our community-driven, community-maintained projects offer **6.9 million people** like Hureata healthier futures with free time to pursue the economic opportunities that can lift their families out of poverty.



## SUPPORTER

EWB-USA Board President Joe Adams and his wife Pat Habel furthered our impact with a \$1M transformative gift in 2017.

They join **10,620 other donors** that invested in sustainable solutions last year.

“EWB-USA’s mission matches my personal goals perfectly. Making a significant gift to EWB-USA was the natural thing to do.” -Joe Adams, P.E.



## FIELD PARTNERS

EWB-USA projects are always team events. In 2017, we worked in partnership with more than **1,500 communities, community-based organizations, nonprofits, governments and United Nations agencies** to engineer change.



## PROFESSIONAL VOLUNTEER

Tim McGrath, PhD, P.E., has been a mentor for an EWB-USA student chapter since 2009. He's traveled to Bbanda, Uganda, 15 times with over 40 students, investing several hundred hours in bringing clean water to the 1,100 people living in this community.

Tim is one of **4,849 professional members**.

"Tim truly understands how to be an effective mentor. He always encourages students to think for themselves and solve their own problems. Tim helps students to grow as leaders while developing their technical skills. He is my personal role model of professionalism and expertise."  
- Phil Gunderson, student member



## STAFF

Civil engineer and former student member Elizabeth Diaz works out of our Nicaragua office and manages the review process for programs in that country.

EWB-USA's **38 staff members** are a multilingual, multicultural group of global citizens.



We are  
**IMPACTFUL**



We are **Impactful**

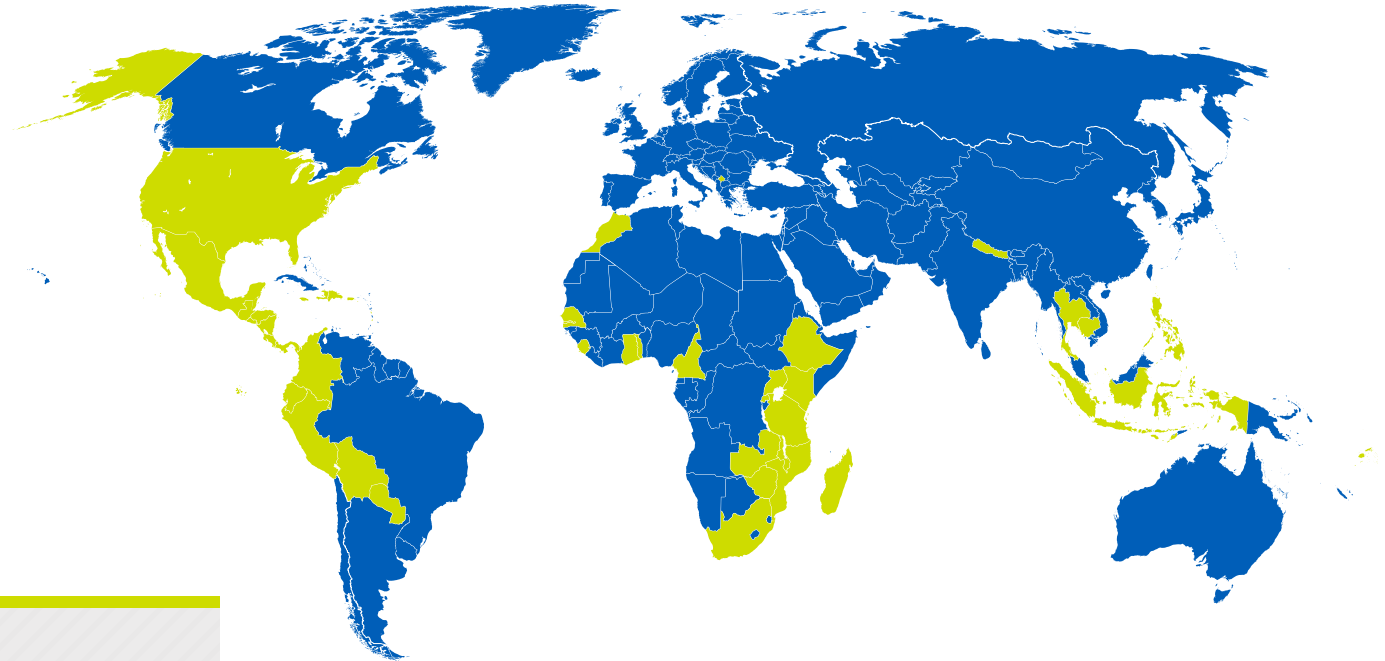
**45**  
COUNTRIES

**16**  
STATES

**2**  
TERRITORIES

# Where We Work

Around the world, people are experiencing the impact of our projects in their daily lives. Water distribution systems, vehicular bridges, wastewater treatment systems and coffee fruit processing facilities change the landscape of what's possible for people in 45 countries, 16 U.S. states and two U.S. territories.



BELIZE  
BOLIVIA  
CAMBODIA  
CAMEROON  
COLOMBIA  
COSTA RICA  
DOMINICA  
DOMINICAN REPUBLIC  
ECUADOR  
EL SALVADOR  
ETHIOPIA  
FIJI  
GAMBIA  
GHANA  
GUATEMALA

HAITI  
HONDURAS  
INDIA  
INDONESIA  
JAMAICA  
KENYA  
KOSOVO  
MADAGASCAR  
MALAWI  
MEXICO  
MOROCCO  
MOZAMBIQUE  
NEPAL  
NICARAGUA  
PANAMA

PARAGUAY  
PERU  
PHILIPPINES  
RWANDA  
SENEGAL  
SIERRA LEONE  
SOUTH AFRICA  
ST. LUCIA  
TANZANIA  
THAILAND  
TOGO  
UGANDA  
UNITED STATES  
ZAMBIA  
ZIMBABWE

## Office Locations

- ◆ DENVER, COLORADO, USA
- ◆ LA ESPERANZA, QUETZALTENANGO, GUATEMALA
- ◆ JOYABAJ, QUICHÉ, GUATEMALA
- ◆ ESTELI, NICARAGUA
- ◆ MANAGUA, NICARAGUA

We are **Impactful**

# Deepening Our Impact

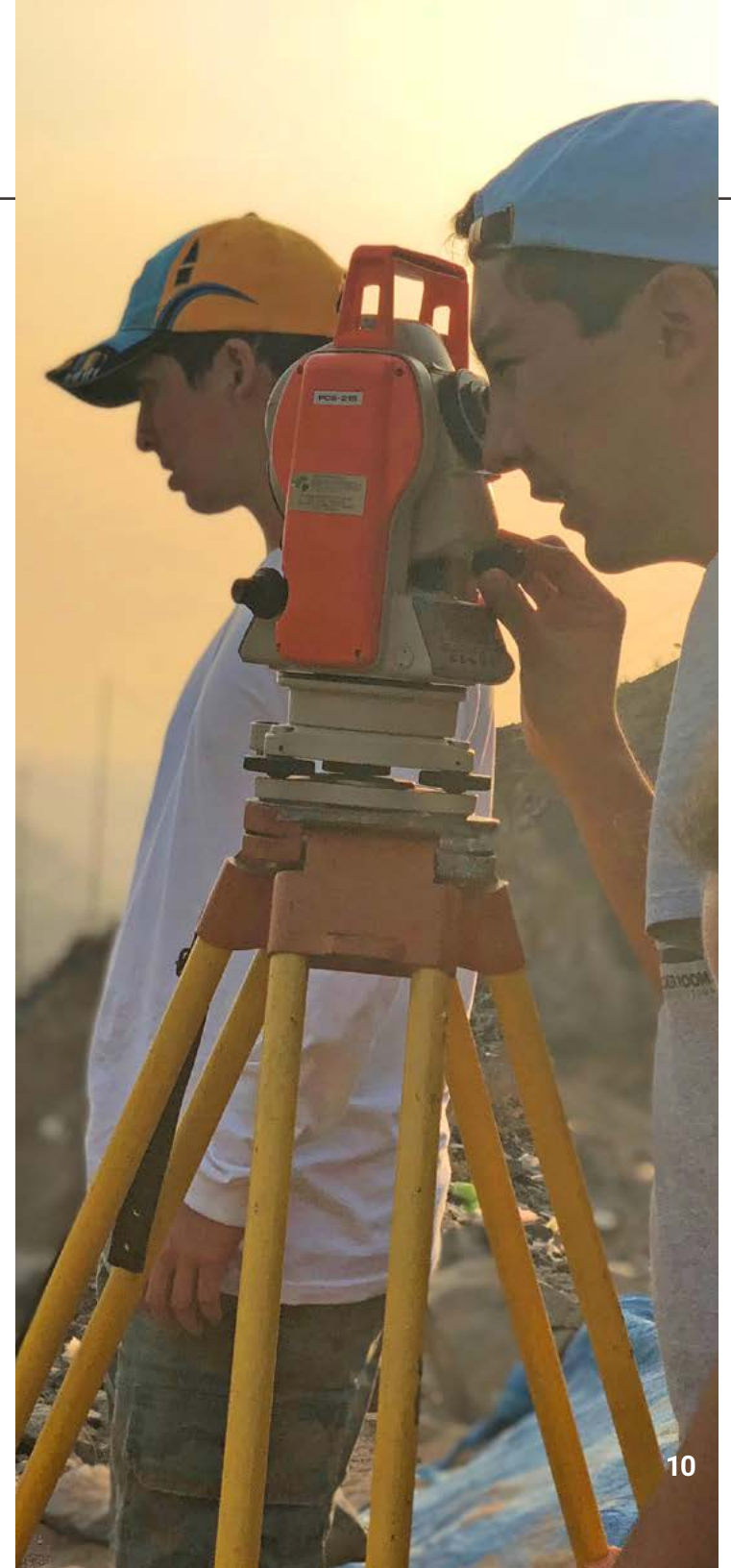
Our footprint on the globe will change in 2018. We're shifting how and where we work to achieve greater impact for our partner communities and volunteers.

Over our 15-year history, EWB-USA has accepted requests for support from across the globe. We have partnered on hundreds of projects designed to help communities meet their basic human needs and accepted requests for help from any community, anywhere.

Global indices ranking countries' wealth and capacity affirm that all countries are not in equal need of our support. We're narrowing our focus to target countries that need our help most. This will ensure that we're not displacing work for engineers in countries that have that capacity or are on track to have it in the next few years.



We're going deeper, not wider, by moving to a field-driven approach. **This concentrated effort allows for the implementation of projects that scale and replicate. Country offices staffed with experts, such as our current field operations in Guatemala and Nicaragua, will guide our future programming.**



We are **Impactful**

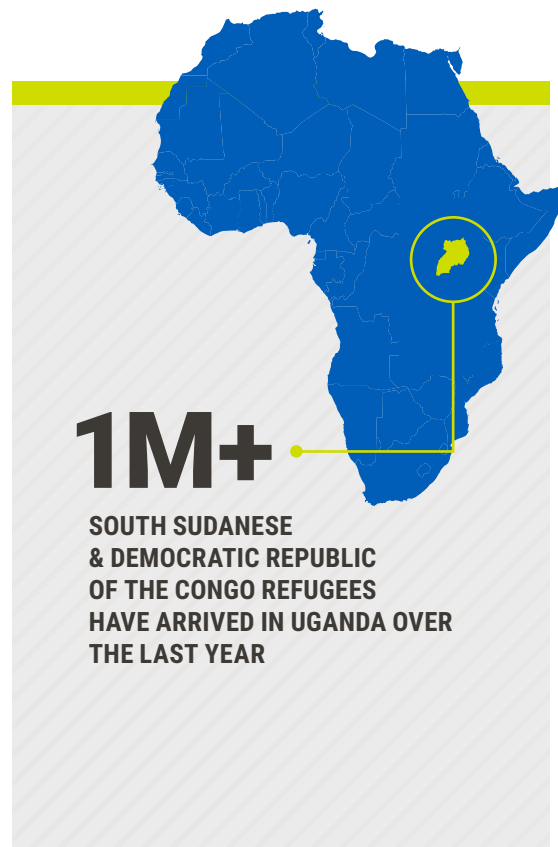
# New Country Office

The next step toward greater impact:  
**We're opening a country office in Uganda in 2018.**

**As one of the poorest countries in the world, Uganda has enormous needs for small-scale infrastructure at the village level.** These needs range from water supply and sanitation to schools, roads, health clinics, bridges, alternative energy and food security — all of which can be effectively addressed through EWB-USA's capabilities.

**Uganda is also ground zero of a refugee crisis.** Over the last year, more than 1,000,000 South Sudanese and Democratic Republic of the Congo refugees have arrived in Uganda fleeing fierce fighting and seeking protection. This mass influx is generating a greater demand for water resources on the part of the refugee communities, and places a strain on the capacity of Ugandan communities in border regions that host their new refugee neighbors.

EWB-USA is uniquely positioned to provide the engineering expertise that is not currently available among NGOs working in Uganda.



We are **Impactful**

# People

In 2017, we completed construction and provided an array of other services, such as technical reports aimed at improving water quality and ensuring that buildings are able to withstand hurricanes, for 195 projects serving 1.7 million people.



**195**

PROJECTS  
COMPLETED

SERVING



**1.7M**

PEOPLE

But sinking the last nail is not the end of our commitment to our communities and partners around the world. **Over the course of the year, we worked in collaboration with an additional 5.1 million people to assess their needs, identify engineering solutions, share knowledge and provide training.**



We are **Impactful**

# Projects

EWB-USA's highly skilled volunteers know how to solve the infrastructure challenges that prevent billions of people from living healthy, productive lives. Last year, many powerful partnerships provided opportunities to apply our engineering expertise to projects addressing clean water and sanitation, affordable and clean energy, resilient structures, climate change and more.



## DOMINICA

After Hurricane Maria struck, we assisted the World Bank in a rapid assessment of roads and bridges. Our findings guided the development community's recovery plan for this ravaged island nation. In partnership with the United Nations Development Program, we trained 75 Ministry of Housing staff to assess 30,000 damaged structures and taught 400 local builders climate-resilient building practices.



## GUATEMALA

We completed a seismic-resilient building that serves as the first dedicated space for high school in the 120,000-person municipality of Joyabaj. Education in the region continues to reach new heights, with the space now being used in the evenings for 150 students to access free, college-level education at a branch of Guatemala's Public University.

## MALAWI

We're working with Freshwater Project International to improve maternal health and reduce maternal mortality through reliable, convenient access to water at six rural health facilities serving 141,000 people. No more hauling 44-pound jerry cans of water followed by unsafe storage practices. Now, medical staff can flip on a tap in the delivery room and provide a safer birth experience.

We are **Impactful**

# Projects



## NICARAGUA

We're helping farmers break the cycle of poverty. In collaboration with the 138 families living in the Agros community of Tierra Nueva, we designed and built a coffee processing facility and wastewater treatment system. Coffee berry processing increased by 40 percent this year and the wastewater created during the berry cleaning is being properly treated prior to being re-released: two big wins for economic opportunity and nature.



## CALIFORNIA

The Salinas Valley is known as "America's salad bowl" due to its highly productive agricultural lands. But many rural communities within the valley are suffering from the impacts of water supplies contaminated with dangerously high levels of nitrogen from fertilizer. EWB-USA contributed our expertise via six technical reports with recommendations for alternative water sources and key information utilized in a larger regional planning document.



## ETHIOPIA

Five refugee camps house 220,000 Somali refugees living a perilous existence. In partnership with the United Nations Office of the High Commissioner for Refugees and the Ikea Foundation, we've completed installation of one-third of 52 solar micro-grids that fuel the camps with clean power and bring the safety and security that comes with reliable access to energy and freedom of movement after dark.

# 651 Projects Underway



**384**

**WATER  
PROJECTS**



**77**

**STRUCTURES  
PROJECTS**



**40**

**ENERGY  
PROJECTS**



**77**

**SANITATION  
PROJECTS**



**44**

**AGRICULTURE  
PROJECTS**



**25**

**CIVIL WORKS  
PROJECTS**



**3**

**INFORMATION SYSTEM  
PROJECTS**



**1**

**DISASTER RECOVERY  
PROJECT**



We are  
**DISRUPTORS**

**IN THE CLASSROOM. IN THE WORKPLACE. IN THE INDUSTRY.**



## We are **Disruptors**

In 2017, EWB-USA's 14,000+ members enhanced their technical and interpersonal skills through project and service opportunities, as well as coaching and guidance from humanitarian engineering experts.

---

With this global learning lab at their fingertips, it's no wonder our members stand out in the classroom, in the workplace, and in the industry.

Last year, EWB-USA produced two new multimedia courses that guide members through a successful volunteer journey with the organization. Equipped with that training, more than 1,400 volunteers elevated their education on service learning trips. Whether it was in the mountains of Peru or trekking through red clay in Malawi, our volunteers gained hands-on experience in the field, grew their cross-cultural communication capabilities, and sharpened their critical thinking and problem-solving skills.

EWB-USA continues transforming the landscape of education and the larger engineering industry. Our volunteers drastically alter the makeup of a traditionally male-dominated industry.



**“The engineering field can’t meet its potential if you leave out the talents of half the population. Without diversity, we limit what we can do—the problems we can solve and the solutions we can offer. Our differences are opportunities and EWB-USA’s message is simple: engineering is for everyone.”**

**-CATHY LESLIE (LEFT IN PHOTO), P.E.,  
EWB-USA EXECUTIVE DIRECTOR**



**A mere 14 percent of the engineering workforce is female, while more than 40 percent of our student membership is female.**  
**We're proud to be a home for disruptors of the status quo.**

# Our Financial Story

**EWB-USA's partners invest in our impact.** Through their generous contributions, we're able to make a real difference in people's daily lives. From our community partners to our corporate partners, we stand united in the shared belief that engineers have the power to change the world.

## STATEMENT OF FINANCIAL POSITION

**2017**

### ASSETS

#### CURRENT ASSETS

CASH AND CASH EQUIVALENTS	\$ 3,288,501
INVESTMENTS	1,989,255
GRANTS RECEIVABLE	237,222
MEMBERSHIP DUES RECEIVABLE	90,065
PREPAID EXPENSES	137,862
PROJECT ADVANCES	208,869
FUNDS HELD ON BEHALF OF EWB-INTERNATIONAL	260,820
PROPERTY & EQUIPMENT (NET)	273,694

**TOTAL ASSETS** **\$ 6,486,288**

### LIABILITIES

#### CURRENT LIABILITIES

ACCOUNTS PAYABLE & ACCRUED EXPENSES	\$ 221,305
AGENCY LIABILITY	260,820
REFUNDABLE ADVANCE	200,000
DEFERRED REVENUE	125,817

**TOTAL LIABILITIES** **\$ 807,942**

### NET ASSETS

UNRESTRICTED	\$ 252,289
RESTRICTED	5,426,057

**TOTAL NET ASSETS** **\$ 5,678,346**

**TOTAL LIABILITIES & NET ASSETS** **\$ 6,486,288**

# Our Financial Story

## STATEMENT OF ACTIVITIES

2017

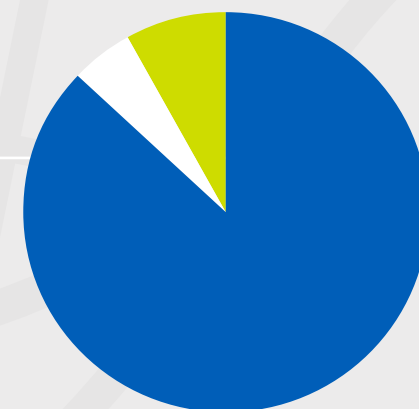
### SUPPORT & REVENUE

	UNRESTRICTED	TEMPORARILY RESTRICTED	TOTAL
CONTRIBUTIONS & GRANTS	\$ 3,160,880	2,366,091	\$ 5,526,971
MEMBERSHIP DUES	337,321	-	337,321
CHAPTER FEES	123,651	-	123,651
CONFERENCE REVENUE	85,801	-	85,801
IN-KIND PROJECT MENTOR CONTRIBUTIONS	3,561,900	-	3,561,900
INVESTMENT RETURN	45,907	-	45,907
OTHER INCOME	42,448	-	42,448
NET ASSETS RELEASED FROM RETRICTIONS	1,790,460	( 1,790,460 )	-
<b>TOTAL SUPPORT &amp; REVENUE</b>	<b>\$ 9,148,368</b>	<b>\$ 575,631</b>	<b>\$ 9,723,999</b>

### EXPENSES

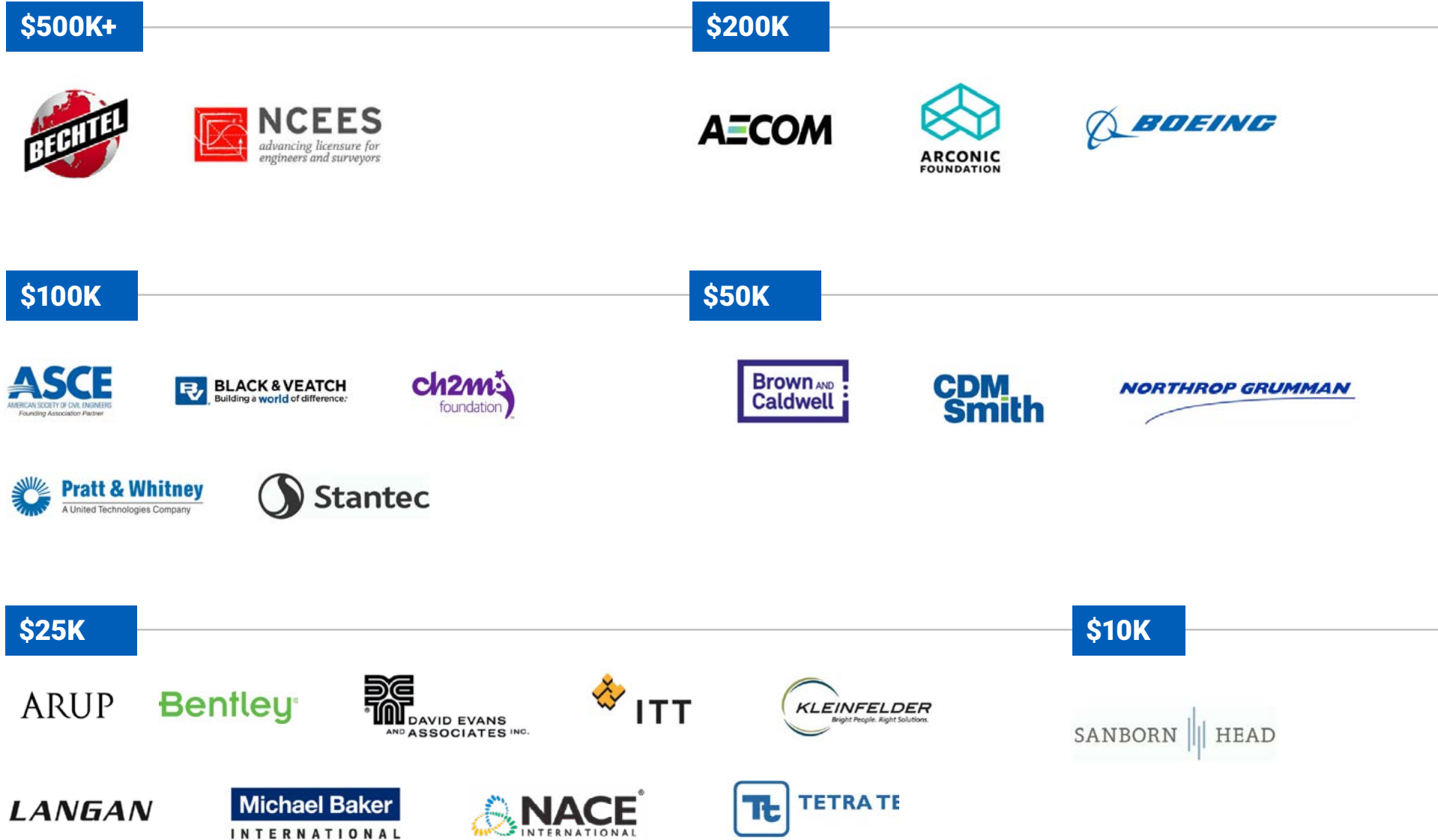
	UNRESTRICTED	TEMPORARILY RESTRICTED	TOTAL
PROGRAM SERVICES	7,920,869	-	7,920,869
GENERAL & ADMINISTRATIVE	420,822	-	420,822
FUNDRAISING	739,714	-	739,714
<b>TOTAL EXPENSES</b>	<b>\$ 9,081,405</b>	<b>-</b>	<b>\$ 9,081,405</b>

CHANGE IN NET ASSETS	66,963	575,631	642,594
NET ASSETS (BEGINNING OF PERIOD)	185,326	4,850,426	5,035,752
<b>NET ASSETS (END OF PERIOD)</b>	<b>\$ 252,289</b>	<b>\$ 5,426,057</b>	<b>\$ 5,678,346</b>



■ PROGRAM SERVICES: 91%  
■ GENERAL & ADMINISTRATIVE: 4%  
■ FUNDRAISING: 5%

# Our Capacity Builders



# Our Capacity Builders

On behalf of our volunteers and all the communities around the world that partner with EWB-USA, we thank and recognize the donors below who gave \$1,000 or more to strengthen our capacity to engineer change.

## \$200K+

JOE ADAMS AND PAT HABEL

## \$100K–\$199,999

ANONYMOUS

## \$50K–\$99,999

COLIN & ROBERTA MOORE

## \$25K–\$49,999

PHILIP & NANCY NAECKER  
THE 214 PHILANTHROPIC FOUNDATION INC.

## \$10K–\$24,999

ANONYMOUS  
JOSEPH A. AHEARN  
CHAMBERS FAMILY FOUNDATION  
DTE ENERGY

ENGINEERING INFORMATION  
FOUNDATION  
JOHN AND LINDA MACDONALD  
FOUNDATION  
BRUCE NIEMAN

RED MOUNTAIN FUND  
THE BAYLESS CHARITABLE FUND  
THE DON YONDER FOUNDATION

## \$5K–\$9,999

ASPECT CONSULTING LLC  
DAVE COOK, LG, CPG  
ANDREW DSIDA  
JONATHAN FEYER

CHRIS JESKE  
PATRICIA MCCLEARN  
FRANCIS PRELI  
ROBERT SARDIS  
DON & CHRIS STEVENS

THE THOMAS P. WATERS  
FOUNDATION  
THE TOMEIO FAMILY  
CHARITABLE FUND

## \$2K–\$4,999

ANONYMOUS (2)  
BURNS & MCDONNELL  
KATHY CALDWELL & RON COOK  
JODY K. DEBS  
PHILIPPE & JACQUELINE  
EBERHARD

CHRISTIAN FERNHOLZ  
RICHARD FOX  
GEOSYNTEC CONSULTANTS  
GPK FOUNDATION  
JOHN HARDING FAMILY  
FOUNDATION  
KURTZ FAMILY FOUNDATION

KUTZMANN & ASSOCIATES, INC.  
LINDA LANNEN  
STEVE & CATHY LESLIE  
MICHAEL MAGILL  
ROY & BETTY MAYFIELD  
DANIEL MELCHER  
VERA NIGRIN

RALPH NOISTERING  
RUDY & ALICE RAMSEY  
FOUNDATION  
PAUL SHEA  
JOHN SPYHALSKI  
JEFFREY STEVENS

THE DOUGLAS C BEATON  
FAMILY FOUNDATION  
THE FULLER FAMILY  
CHARITABLE FUND  
THE KAMMINGA &  
ROODVOETS, INC.  
CHARITABLE FUND

THORNTON TOMASETTI  
FOUNDATION  
TIM WEHRKAMP  
MARK WILLIAMS  
ELAINE WINNER  
WSP PARSONS  
BRINCKERHOFF

## THE CORNERSTONE SOCIETY

The Cornerstone Society recognizes those individuals who have chosen to leave a lasting charitable legacy by including EWB-USA in their will, trust or estate plan.

VILAS & INGRID MUJUMDAR  
MICHAEL & CATHERINE PADDOCK  
TYLER PALMER  
NORMAN L. WINN

## \$1K–\$1,999

ANONYMOUS (3)  
RICHARD & ELIZABETH ALLEN  
AMERICAN INSTITUTE OF  
CHEMICAL ENGINEERS  
JONATHAN & MARISA AMORY  
BASALT FOUNDATION INC.  
BARBARA BEHRENDT  
JEFF AND LISA BENNETT  
MR. & MRS. T.G. BERK  
KAITLIN BEST  
DANIEL BOETTCHER  
ISAAC BROWN

DAN & LAURIE BURK  
PHIL & JUDY CAGNEY  
SHERREN CLARK  
COLE ENGINEERING  
SOLUTIONS PSC  
SPENCER COMMONS &  
MARTHA GATES  
RUSSELL COX  
PATRICK COYLE  
JEFFREY & ELIZABETH DIERCKS  
SAMUEL DOLLENMEIER  
MICHAEL ECKHARDT  
KATHRYN ENGHOLM

DAVID ENGLAND  
BERNADETTE P. AND THOMAS  
N. FARRIS  
THOMAS AND SUSANNAH  
GRAEDEL  
HANS & DORIS GRUNWALD  
CAROLYN & BERNARD  
HAMILTON  
JON HURT  
ROBERT HUTSON  
WILLIAM & SARAH JESSEE  
BRENDA KETAH  
HUGH & URLING KINGERY

JAY KIRCHOFF  
KATHY KIRSCHNER  
SETH LAFORGE & ANIA MITROS  
LEEANNE M. LANG  
JOAN LINHARDT, M.D.  
DAN & LAURA LIOTTI  
JOHN & JEAN MORRIS  
PHILIP MOSER  
JACQUELINE O'BRIEN  
DOUGLAS & JILL OGINO  
DAVID PALMER  
ANDREW PALMISANO

PATRICK ENGINEERING INC  
ROBERTA QUIAT  
ROBERT REYNOLDS  
SANGREE FAMILY FOUNDATION  
ELIZABETH SCHODEK  
RALPH SHAW  
DEBORAH SHUST  
SME FOUNDATION  
BEN STARK  
CHERYLE SULLIVAN  
THE BROOK FAMILY  
FOUNDATION  
JOSHUA WATSON

DUSTIN WELLS  
NORMAN L. WINN  
WSP FOUNDATION INC.  
ROBERTA WOOD, TYLER  
PALMER'S MOM  
CAROLYN & DAVID WORSLEY  
FRANK R. AND FAYE M.  
ZIMMERMAN FAMILY FUND  
HOWARD ZWIEFEL & MARY KAY  
GOBRIS

# Our Board of Directors

## **Kathy J. Caldwell, P.E.,** President

PRESIDENT, CALDWELL COOK & ASSOCIATES

## **Dave Cook, LG, CPG,** Past President

PRINCIPAL GEOLOGIST, ASPECT CONSULTING LLC

## **Joseph D. Adams, P.E.,** President Elect

OWNER, JOE ADAMS GROUP

## **Bernard Amadei, Ph.D., P.E.,** ex officio

FOUNDER, ENGINEERS WITHOUT BORDERS USA  
PROFESSOR OF CIVIL ENGINEERING, UNIVERSITY OF COLORADO BOULDER

## **Catherine A. Leslie, P.E.,** Secretary

EXECUTIVE DIRECTOR, ENGINEERS WITHOUT BORDERS USA

## **Jody Debs**

GENERAL COUNSEL, HDR, INC.

## **Thomas Farris, Ph.D.**

DEAN, RUTGERS SCHOOL OF ENGINEERING

## **Jon Hurt, P.E.**

PRINCIPAL, ARUP

## **Natasha Koermer**

STUDENT MEMBER REPRESENTATIVE  
HEALTHCARE SYSTEMS ENGINEER, MITRE

## **Christopher Lombardo, Ph.D.**

FACULTY REPRESENTATIVE  
ASSOCIATE DIRECTOR OF UNDERGRADUATE STUDIES IN ELECTRICAL  
AND MECHANICAL ENGINEERING, HARVARD JOHN A. PAULSON SCHOOL  
OF ENGINEERING AND APPLIED SCIENCES

## **Bruce Nieman, P.E.**

PROFESSIONAL REPRESENTATIVE  
PLATFORM MANAGER, DTE ENERGY

## **Brian Reilly, P.E.**

SENIOR VICE PRESIDENT, BECHTEL NATIONAL, INC.

## **Andrew W. Reynolds**

ADJUNCT PROFESSOR, SCHOOL OF ENGINEERING AND APPLIED SCIENCE,  
UNIVERSITY OF VIRGINIA

## **Donald R. Stevens, P.E.**

EXECUTIVE VICE PRESIDENT, BLACK & VEATCH

## **Robert D. Stevens, Ph.D., P.E., F.ASCE**

ASCE REPRESENTATIVE  
EXECUTIVE VICE PRESIDENT, ARCADIS

## **Mark Woodson, P.E., F.ASCE,**

ASCE REPRESENTATIVE  
PRESIDENT, WOODSON ENGINEERING AND SURVEYING, INC.